



# Valmorel

4Ψ France

*Experience the heart of Savoie*



## Resort Highlights

- Discovering a charming ski resort with a majestic view of mont Blanc
- Leaving for a day on the slopes in the knowledge that your babies are in great hands and your little ones learning to ski (from age 3)
- Time will stand still in this 600 sq metre Zen paradise at Club Med Spa by CARITA.
- The total elegance of your 48 sqm (515 sq ft) Suite, in the 5Ψ Luxury Space, "Le Lodge"



# Resort Map



**Notes d'attention**

Valmorel: du samedi 17 décembre 2016 au dimanche 14 avril 2017  
 Ouvert pour l'été: du 19 juin au 19 août 2017  
 Charrette: du samedi 17 décembre 2016 au dimanche 14 avril 2017  
 Ouvert pour l'été: du 19 juin au 19 août 2017  
 Perrauport: du samedi 17 décembre 2016 au dimanche 14 avril 2017  
 Ouvert pour l'été: du 19 juin au 19 août 2017

**Services de Ski Patrol: +33 (0)4 79 09 80 26**

Station	Remonte-pente	Remonte-pente	Remonte-pente	Remonte-pente
Charrette	1000	1000	1000	1000
Perrauport	1000	1000	1000	1000
Saint-François Longchamp	1000	1000	1000	1000

**Services d'été**

Valmorel: du samedi 17 décembre 2016 au dimanche 14 avril 2017  
 Ouvert pour l'été: du 19 juin au 19 août 2017  
 Charrette: du samedi 17 décembre 2016 au dimanche 14 avril 2017  
 Ouvert pour l'été: du 19 juin au 19 août 2017  
 Perrauport: du samedi 17 décembre 2016 au dimanche 14 avril 2017  
 Ouvert pour l'été: du 19 juin au 19 août 2017

From 1860m to 3330m  
 237 km of slopes  
 14 29 34 38

**RESORT:**  
**VALMOREL**  
 Ski-in / Ski-out resort  
 No minimum age

## Summary

- Sports & Activities
- Facilities
- Childrens' Services
- Restaurants & Bars
- Accommodation
- Space 5T
- Wellness & Excursions
- Practical Information





# Sports & Activities



## Winter Sports

	At extra cost course	Group Lessons	Free Access	Min. age (years)	Dates of Availability
Snow Motion		Beginners			Always
Skiing School		Lessons for all levels (French / English) / On site / Intermediate/ advanced / Group lessons for all levels (age and date restrictions may apply) / Intermediate to expert / Beginners to intermediate / Beginners		4 years old	Always
Snowboard School		Lessons for all levels (French / English) / Intermediate/ advanced / Intermediate to expert / Beginners to intermediate		4 years old	Always
Walks, snow shoe walks and Nordic walking		Initiation group lessons / All levels		12 years old	Always

\*on demand

\*\*Depending on weather conditions

\*\*\* Pre-bookable green fee packages at extra cost



	At extra cost course	Group Lessons	Free Access	Min. age (years)	Dates of Availability
Activities proposed in the resort*	✓				Always

## Land Sports & Leisure

	At extra cost course	Group Lessons	Free Access	Min. age (years)	Dates of Availability
Fitness School		Initiation		16 years old	Always
Weights and cardio room		Free access			Always
Entertainment			✓		Always
Swimming Pool activities			✓		Always

\*on demand

\*\*Depending on weather conditions

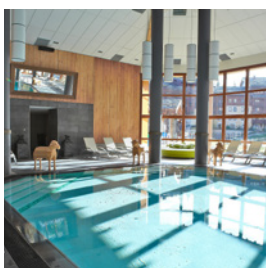
\*\*\* Pre-bookable green fee packages at extra cost



# Facilities

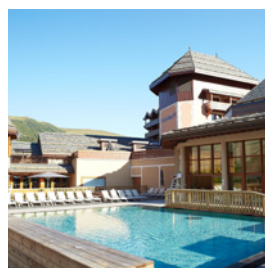


## Swimming Pools



### INDOOR POOL

Indoor Pool  
Heated  
Depth (min/max): 0.8m / 1.4m  
Enjoy some relaxing moments in this 120 m<sup>2</sup> (1,300 ft<sup>2</sup>) pool, and 15 m<sup>2</sup> (160 ft<sup>2</sup>) children's paddling pool.



### MAIN POOL

Outdoor Pool  
Heated  
Only open summer, pool in the heart of the Resort.





# Childrens' Services



## Childrens' Clubs

Age Range	Name	Included Activities	On demand activities	Dates of Availability
0 to 2 years	Baby Club Med®	Walks		From 07-03-2020 to 12-04-2020 From 13-12-2020 to 03-04-2021
2 to 3 years	Petit Club Med	Show time		From 07-03-2020 to 12-04-2020 From 13-12-2020 to 03-04-2021
4 to 10 years	Mini Club Med	Show time		From 07-03-2020 to 12-04-2020 From 13-12-2020 to 03-04-2021
11 to 17 years	Club Med Passworld	Show time		From 07-03-2020 to 12-04-2020 From 13-12-2020 to 03-04-2021

## Childrens' Activities

Age Range	Included Activities	On demand activities
0 to 2 years	Family "Big Snack"	
2 to 3 years	Family "Big Snack"	
4 to 10 years	Family "Big Snack"	
11 to 17 years	Family "Big Snack"	



\*on demand

## Childrens' Services

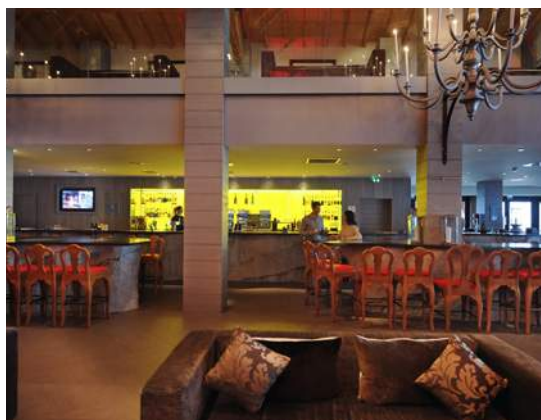
Age Range	Included activities & facilities	On demand activites & facilities
0 to 2 years	Easy Arrival	
2 to 3 years	Easy Arrival	
4 to 10 years	Easy Arrival	
11 to 17 years	Easy Arrival	



\*on demand



# Restaurants



## Restaurants

### Bars

#### LE ROC BAR

Main bar

#### THE BAR DE LA TOUR

### The Cerfs and The Céleste

Main Restaurant

The character of these two restaurants is in tune with the season, each with its own distinct beauty. The terraces open from mid-March, with the first wild flowers. In the winter season, enjoy the best of après-ski dining overlooking beautiful mountain vistas from a warm and welcoming dining room. The contemporary decor adds a funky touch to the traditional mountain chalet interior. Whatever the time of day or year, the restaurant serves a wide range of freshly cooked, international cuisine.

### La Laiterie Gourmet Lounge

Gourmet Lounge

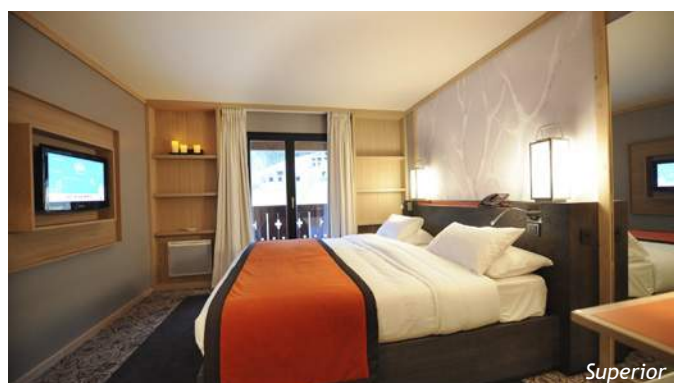
In a cozy atmosphere, this restaurant around a gourmet counter is a real space dedicated to tasting and also offers a bar, a wine cellar\* and a delicatessen\*. You can dine throughout the day. In the evening, dinner on reservation, on the menu: mountain-style tapas or set menu showcasing local produce. \*A la carte







# Accommodation



Category	Name	Min. m <sup>2</sup>	Highlights	Capacity	Bathroom	Equipment and services
Superior	Superior Room - Balcony	24		1 - 3		Laundry service (extra charge), Luggage service, Cleaning on demand, Pool towel
	Interconnecting Superior Rooms - Balcony	48		2 - 6		
	Superior Room - Balcony interconnecting with Superior Room	48		2 - 6		
	Superior Room - Mobility Accessible, Balcony	24		1 - 2		
	Superior Room	24		1 - 3	Bathtub, Separate toilets, Twin vanity sinks, Hair Dryer, Heated towel rail, Magnifying mirror	Laundry service (extra charge), Luggage service, Cleaning on demand, Pool towel
	Superior Room - Mobility Accessible	24		1 - 2	Bathtub, Separate toilets, Twin vanity sinks, Hair Dryer, Magnifying mirror, Heated towel rail	
	Interconnecting Superior Rooms	48		4 - 6	Bathtub, Twin vanity sinks, Separate toilets, Hair Dryer, Heated towel rail, Magnifying mirror	Laundry service (extra charge), Luggage service, Cleaning on demand, Pool towel
Deluxe	Deluxe Room Interconnecting with Superior Room - Valley View	53	Lounge area	4 - 5	Bathtub, Twin vanity sinks, Separate toilets, Bathrobe, Slippers, Hair Dryer, Heated towel rail, Magnifying mirror	Laundry service (extra charge), Luggage service, Cleaning on demand, Pool towel
	Deluxe Room	29	Lounge area	1 - 2	Bathtub, Separate toilets, Hair Dryer, Magnifying mirror, Bathrobe, Slippers, Twin vanity sinks, Heated towel rail	Laundry service (extra charge), Luggage service, Cleaning on demand, Pool towel
	Deluxe Room interconnecting with Superior Room - Balcony	48		2 - 5		
	Deluxe Room interconnecting with Superior Room	48		2 - 5		
	Interconnecting Deluxe Rooms	58	Lounge area	4	Bathtub, Twin vanity sinks, Separate toilets, Bathrobe, Slippers, Hair Dryer, Heated towel rail, Magnifying mirror	Laundry service (extra charge), Luggage service, Cleaning on demand, Pool towel
	Deluxe Room Interconnecting with Superior Room	53	Lounge area	4 - 5	Bathtub, Twin vanity sinks, Separate toilets, Bathrobe, Slippers, Hair Dryer, Heated towel rail, Magnifying mirror	

Category	Name	Min. m <sup>2</sup>	Highlights	Capacity	Bathroom	Equipment and services
Exclusive Collection Space	Exclusive Collection Space Suite - Mobility Accessible	30	Separate Living Room	1 - 2	Bathtub, Shower, Separate toilets, Twin vanity sinks, Hair Dryer, Heated towel rail, Magnifying mirror, Bathrobe, Slippers, Branded amenities (shampoo, shower gel, body lotion)	Included champagne served by the glass in the private lounge (6pm-11pm), Free lunch for G.M® who arrive before 3pm, Inclusive of room service for continental breakfast, Priority booking at Club Med Spa, Private bar and snacking services at the concierge, Concierge service, Turn down service, Laundry service (extra charge), Luggage service, Cleaning on demand, Private transfer for G.M® with transfer package, Pool towel, Premium Wi-Fi, Priority Booking at the Gourmet Lounge, Room service (at extra cost) from 11 a.m to 10 p.m, Private space in ski room
	Exclusive Collection Space Family Suite	50	Separate kids' room, Separate Living Room	1 - 4	Shower, Separate toilets, Bathtub, Twin vanity sinks, Bathrobe, Slippers, Hair Dryer, Heated towel rail, Magnifying mirror, Branded amenities (shampoo, shower gel, body lotion)	Free lunch for G.M® who arrive before 3pm, Inclusive of room service for continental breakfast, Priority booking at Club Med Spa, Private bar and snacking services at the concierge, Concierge service, Turn down service, Laundry service (extra charge), Luggage service, Cleaning on demand, Private transfer for G.M® with transfer package, Pool towel, Premium Wi-Fi, Priority Booking at the Gourmet Lounge, Room service (at extra cost) from 11 a.m to 10 p.m, Private space in ski room
	Exclusive Collection Space Suite	52		1 - 2		Free lunch for G.M® who arrive before 3pm, Inclusive of room service for continental breakfast, Priority booking at Club Med Spa, Private bar and snacking services at the concierge, Concierge service, Turn down service, Laundry service (extra charge), Luggage service, Cleaning on demand, Private transfer for G.M® with transfer package, Pool towel, Premium Wi-Fi, Priority Booking at the Gourmet Lounge, Room service (at extra cost) from 11 a.m to 10 p.m, Private space in ski room





# Space 5T

Discover Le Lodge, the 5Ψ Luxury Space in the 4Ψ Valmorel Resort. This is the ideal option for those in search of privacy, privileged customised services and luxury comfort, without sacrificing the warm and friendly Club Med spirit.



Room service for continental breakfast is included for all rooms. The concierge service is destined to ensure you of an ideal stay at Club Med - Privileged access to the all-inclusive activities and services at the Resort (priority booking for the speciality restaurant, etc) - A dedicated contact person for booking the à la carte services proposed at the Club Med Resort (treatments at the Club Med Spa\* by Carita, room service from 11am to 10 pm\*(1), babysitting\*(2), laundry service\*, customised excursions\*, etc.) - Expert advice on the excursions\*, activities\*, outings\* and restaurants\* outside Club Med. Bar service in the lounge, with champagne included in the evenings(3). Minibar restocked daily with soft drinks. Wifi access available in the lounge. Private transfer from the railway station to the Resort only for clients with a Transport package.



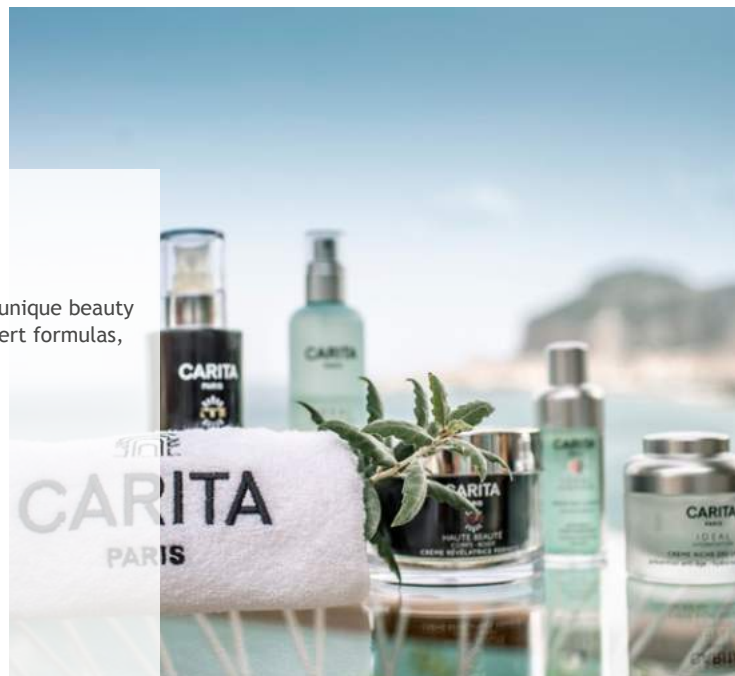
(1) Room service included for continental breakfast. (2) Club Med provides a list of babysitting services on request, but is in no way responsible for the service provided. (3) Only some brands, served by the glass, at 6 pm. Alcohol can be dangerous for the health. \*At extra cost



# Wellness & Excursions

## *Club Med Spa by CARITA*

French icons share the legendary secrets of the Carita sisters and reveal the unique beauty of their faces. Science and nature combine to create a precious blend of expert formulas, meticulous gestures and innovative beauty products.





# Practical Information



**CLUB MED VALMOREL**  
 HAMEAU DU BOIS DE LA CROIX, VALMOREL,  
 Savoie - Valmorel  
 73260, France



Green Globe:  
 International award  
 recognising our resorts  
 for their commitment to  
 sustainable development



## Download My Club Med App!

Discover the resort's dress codes, events, map & practical information.

## Check-in made simple with Easy Arrival

## Information

### CHECK-IN/CHECK-OUT

Classic Week (from Sunday to Sunday) or "à la carte" stays (7 days or less, beginning any other day than Sunday): Arrival and rooms available between 3 and 8 pm. Should you arrive early, you may lunch at the Resort (at extra cost), subject to availability. On the last day, rooms to be vacated by 10 am, departure by 3 pm. Short stays 2 or 3 nights - weekend by Club Med: Arrival between 12 am and 8 pm. Rooms available between 3 and 6 pm. Should you arrive early, you may lunch at the Resort without add. On the last day, rooms to be vacated by 10 am, departure by 3 pm. Should times change, you will be informed via your "Holiday Rendez-Vous".

### TRANSFERS

Grenoble Alpes Isère Airport (150 mins.)  
 Lyon St Exupery airport (150 mins.)  
 Chambéry-Voglans airport (80 mins.)  
 Geneva-Cointrin airport (180 mins.)

