



# Pragelato Vialattea

4Ψ Italy

*Piedmont and the unique pistes of the Via Lattea*



## Resort Highlights

- Strolling through a charming hamlet of Alpine chalets in the Piedmont region
- Following in the path of champions on the Olympic downhill at Sestrières
- Seeing your children having fun in the snow garden and your youngsters hooked on snowboarding
- Savouring Italian gastronomy and mountain specialities

# Resort Map



From 1350m to 2823m  
 400 km of slopes  
 42 118 54 30

**RESORT:**  
**PRIGELATO VIALATTEA**  
 Ski-in / Ski-out resort  
 Min. age (years) 2



## Summary

-  Sports & Activities
-  Facilities
-  Childrens' Services
-  Restaurants & Bars
-  Accommodation
-  Wellness & Excursions
-  Practical Information





# Sports & Activities



## Winter Sports

	At extra cost course	Group Lessons	Free Access	Min. age (years)	Dates of Availability
Snowboard School		Lessons for all levels (French / English / German) / Intermediate/ advanced / All levels / Intermediate to expert / Beginners to intermediate		4 years old	Always
Alpine Skiing School		Lessons for all levels (French / English / German) / Intermediate/ advanced / Beginners / Expert / All levels / Intermediate to expert / Beginners to intermediate		4 years old	Always
Cross Country Skiing School		All levels / Lessons for all levels (French / English / German)		12 years old	Always

\*on demand

\*\*Depending on weather conditions

\*\*\* Pre-bookable green fee packages at extra cost



	At extra cost course	Group Lessons	Free Access	Min. age (years)	Dates of Availability
Walking & Hiking School		Initiation group lessons / All levels		12 years old	Always
Activities proposed in the resort*	✓				Always
Snowmobile*	✓	All levels			Always

## Land Sports & Leisure

	At extra cost course	Group Lessons	Free Access	Min. age (years)	Dates of Availability
Fitness School		Initiation group lessons		16 years old	Always
Cardio training room		Free access			Always
Entertainment			✓		Always
Swimming Pool activities		Initiation group lessons		16 years old	Always

\*on demand

\*\*Depending on weather conditions

\*\*\* Pre-bookable green fee packages at extra cost



# Facilities



## Swimming Pools



### OUTDOOR POOL

Outdoor Pool

Depth (min/max): 1.2m / 1.2m

This pool is ideally located at the centre of the Resort, next to the children's paddling pool and indoor pool.





# Childrens' Services



## Childrens' Clubs

Age Range	Name	Included Activities	On demand activities	Dates of Availability
2 to 3 years	Petit Club Med	Walks		From 07-03-2020 to 12-04-2020 From 20-12-2020 to 03-04-2021
4 to 10 years	Mini Club Med	Show time		From 07-03-2020 to 12-04-2020 From 20-12-2020 to 03-04-2021
11 to 17 years	Junior Club Med		Teen spa	From 07-03-2020 to 12-04-2020 From 20-12-2020 to 03-04-2021

## Childrens' Activities

Age Range	Included Activities	On demand activities
2 to 3 years	Family "Big Snack"	
4 to 10 years	Family "Big Snack"	
11 to 17 years	Family "Big Snack"	

## Childrens' Services

Age Range	Included activities & facilities	On demand activities & facilities
2 to 3 years		Baby-sitting
4 to 10 years		Baby-sitting
11 to 17 years	Easy Arrival	

\*on demand



# Restaurants



## Restaurants

### Bars

#### THE LATERNA

Main bar

#### THE DOLCE VITA

Gourmet Lounge Bar

### Il Piemonte

Main Restaurant

Il Piemonte is just the place to come after a good day out on the slopes. With traditional Italian mountain cuisine, tasteful décor and stunning views of the mountains, what more could you possibly want? Make sure you try some of the local specialities while you're here!

### La Tana

Speciality Restaurant

La Tana provides you with the genuine Italian dining experience. You'll find mountain speciality dishes such as fondue and pierrade, and as well as serving Italian wines, the restaurant sometimes organises wine-tasting sessions.

### La Trattoria

Speciality Restaurant

La Trattoria is one of the Resort's great places to wine and dine. Enjoy a pizza, a plate of pasta or a board of cold cuts and cheese for lunch or dinner in an unforgettable atmosphere. For evening meals, you'll need to book at Reception.

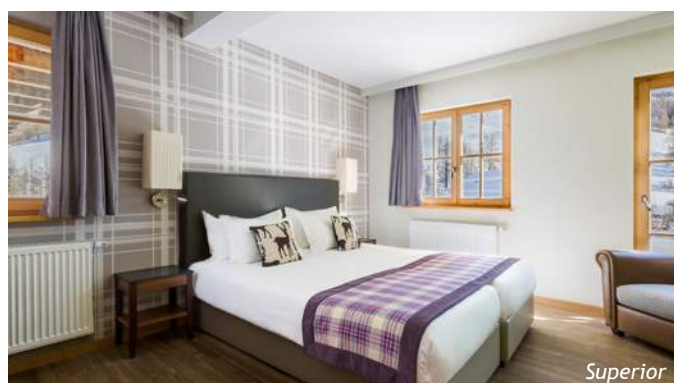
### The Chalet Mollino

Mountain Restaurant

After your morning skiing lessons, you can lunch on the slopes in our mountain restaurant (open in winter only). At Sauze d'Oulx, the Chalet Mollino is, at 2,300 metres (7,545 ft), a mix of traditional mountain architecture and modern technology. Reserved exclusively for Club Med. Open from Monday to Friday (no extra cost) - information and booking on site.



# Accommodation



Superior



Suite

Category	Name	Min. m <sup>2</sup>	Highlights	Capacity	Bathroom	Equipment and services
Superior	Superior Room	23		1 - 3	Shower, Hair Dryer, Heated towel rail, Magnifying mirror, Branded amenities (shampoo, shower gel, body lotion)	Laundry service (extra charge), Luggage service
	Junior Family Superior Room	30	Separate kids' room	1 - 3	Hair Dryer, Shower, Heated towel rail, Magnifying mirror, Branded amenities (shampoo, shower gel, body lotion)	
	Junior Family Superior Room - Balcony	32	Separate kids' room	1 - 3	Shower, Hair Dryer, Branded amenities (shampoo, shower gel, body lotion), Heated towel rail, Magnifying mirror	
	Family Superior Room	67	Separate kids' room	1 - 4	Shower, Hair Dryer, Heated towel rail, Magnifying mirror, Branded amenities (shampoo, shower gel, body lotion)	
	Family Superior Room - Duplex, Balcony	67		1 - 4	Shower, Branded amenities (shampoo, shower gel, body lotion), Hair Dryer	Luggage service
	Superior Room - Mobility Accessible	30		1 - 3	Shower, Hair Dryer, Heated towel rail, Magnifying mirror, Branded amenities (shampoo, shower gel, body lotion)	Laundry service (extra charge), Luggage service
	Family Superior Room Interconnecting with Superior Room	82	Separate kids' room	4 - 6	Shower, Hair Dryer, Heated towel rail, Magnifying mirror, Branded amenities (shampoo, shower gel, body lotion)	Laundry service (extra charge), Luggage service
Suite	Suite	84	Separate Living Room	1 - 2	Hair Dryer, Slippers, Branded amenities (shampoo, shower gel, body lotion), Bathtub, Bathrobe, Heated towel rail, Magnifying mirror, Amenities: accessories (shower cap, vanity kit, manicure kit etc...)	Inclusive of room service for continental breakfast, Turn down service, Laundry service (extra charge), Beach towel, Luggage service, Premium Wi-Fi
	Family Suite	73	Separate kids' room, Separate Living Room	1 - 4	Shower, Hair Dryer, Magnifying mirror, Bathrobe, Slippers, Branded amenities (shampoo, shower gel, body lotion), Heated towel rail, Amenities: accessories (shower cap, vanity kit, manicure kit etc...)	



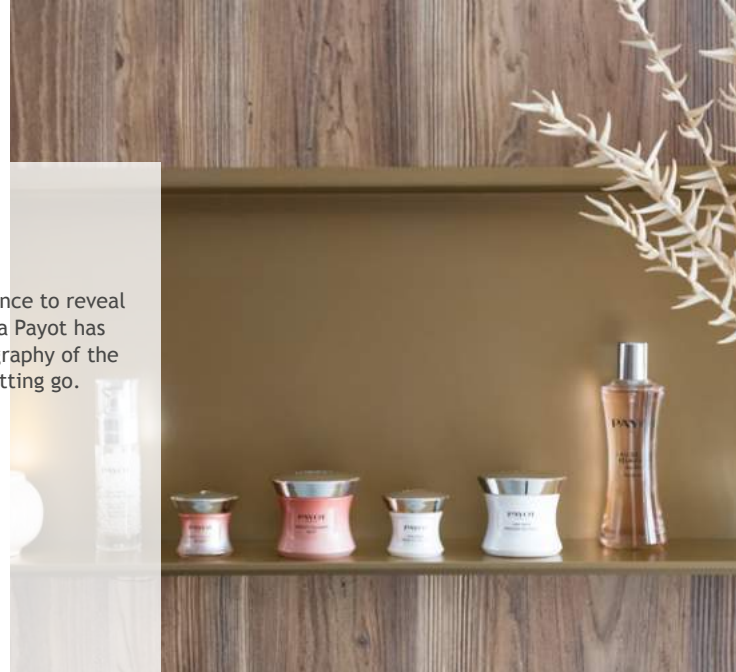


# Wellness & Excursions

## *Club Med Spa by PAYOT*

For nearly 100 years, French excellence has been offering all women the chance to reveal their true beauty. Using manual gestures inspired by dance, the creator Nadia Payot has placed innovative formulas and great sensoriality at the heart of the choreography of the '42 movements'. A cosmetic revolution based on minerals, that's all about letting go.

**PAYOT**  
PARIS





# Practical Information



**CLUB MED PRAGELATO VIALATTEA**  
 VIA MONTE ORSIERA N° 1 FRAZIONE,  
 Piedmont  
 10060, Italy



Green Globe:  
 International award  
 recognising our resorts  
 for their commitment to  
 sustainable development



## Download My Club Med App!

Discover the resort's dress codes, events, map & practical information.

## Check-in made simple with Easy Arrival

## Information

### CHECK-IN/CHECK-OUT

Classic Week (from Sunday to Sunday) or "à la carte" stays (7 days or less, beginning any other day than Sunday): Arrival and rooms available between 3 and 8 pm. Should you arrive early, you may lunch at the Resort (at extra cost), subject to availability. On the last day, rooms to be vacated by 10 am, departure by 3 pm. Short stays 2 or 3 nights - weekend by Club Med: Arrival between 12 am and 8 pm. Rooms available between 3 and 6 pm. Should you arrive early, you may lunch at the Resort without add. On the last day, rooms to be vacated by 10 am, departure by 3 pm. Should times change, you will be informed via your "Holiday Rendez-Vous".

### TRANSFERS

Milan-Linate airport (195 mins.)  
 Milano-Malpensa airport (180 mins.)  
 Turin-Caselle airport (105 mins.)  
 Geneva-Cointrin airport (180 mins.)  
 Milan-Bergame airport (210 mins.)  
 Grenoble Alpes Isère Airport (195 mins.)