



# Phuket

4Ψ Thailand

*Thrilling days and captivating nights, Thailand awaits*

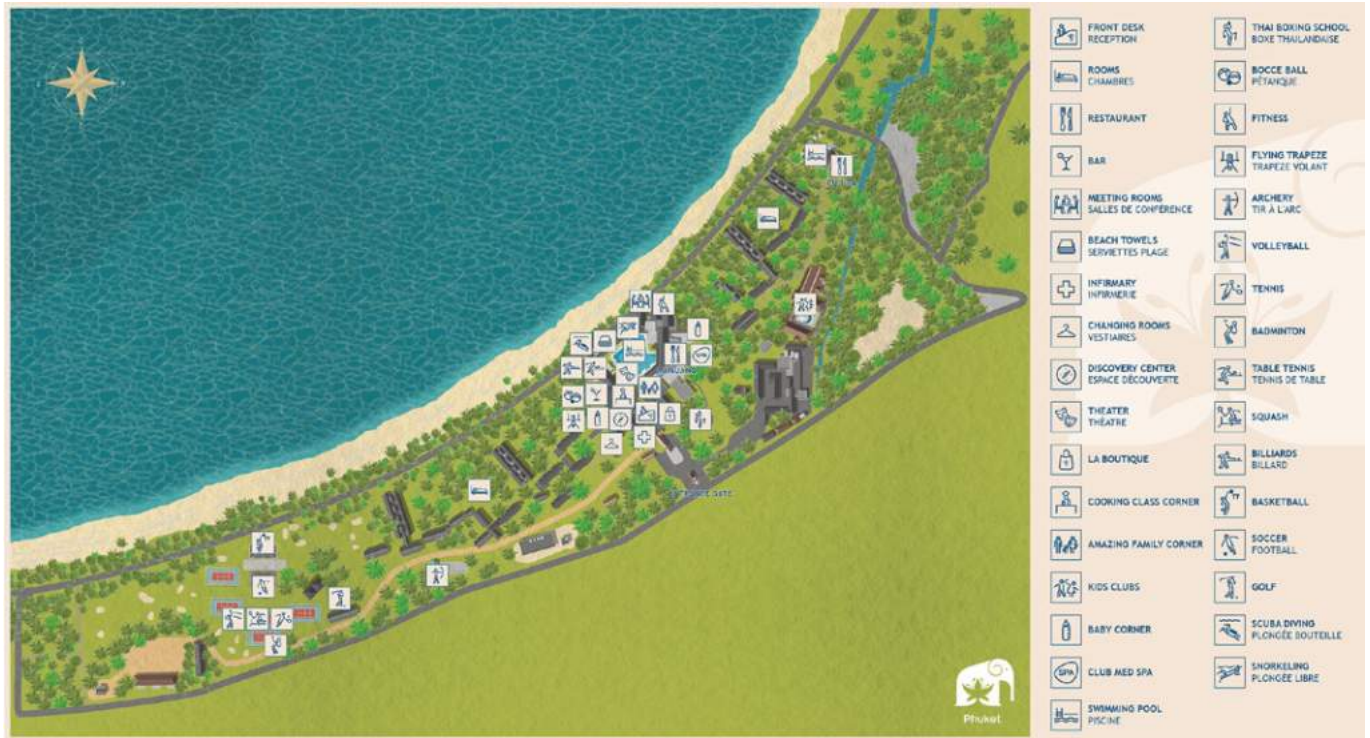


## Resort Highlights

- Discovering new spaces inspired by the magic of contrasts
- Enjoying powerful sensations on the putting green or flying trapeze, or scuba diving
- Seeing your children explore nature with our G.O's from 4 months old
- Enjoying the world of wellness at Club Med Spa
- Visiting the Phi Phi Islands and the Bay of Phang Nga

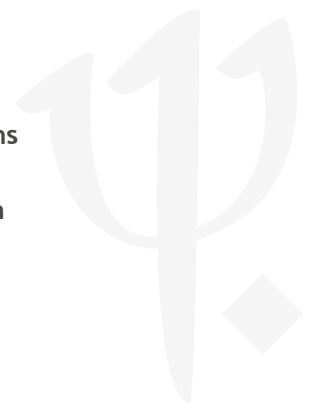


# Resort Map



## Summary

-  Sports & Activities
-  Facilities
-  Childrens' Services
-  Restaurants & Bars
-  Accommodation
-  Wellness & Excursions
-  Practical Information





# Sports & Activities



## Water Sports

	At extra cost course	Group Lessons	Free Access	Min. age (years)	Dates of Availability
Snorkelling		Free access			Always
Scuba diving*	✓	Beginners / Intermediate/ advanced		10 years old	Always

## Land Sports & Leisure

	At extra cost course	Group Lessons	Free Access	Min. age (years)	Dates of Availability
Archery School		Initiation		6 years old	Always
Flying Trapeze School with circus activities		Initiation / Group lessons for all levels (age and date restrictions may apply)		4 years old	Always
Fitness School		Initiation group lessons		11 years old	Always
Golf School		Initiation		8 years old	Always
Tennis School		All levels		4 years old	Always
Thai Boxing School		All levels		8 years old	Always
Basketball		Free access			Always

\*on demand

\*\*Depending on weather conditions

\*\*\* Pre-bookable green fee packages at extra cost



	At extra cost course	Group Lessons	Free Access	Min. age (years)	Dates of Availability
Beach volleyball		Free access			Always
Football		Free access			Always
Squash		Free access			Always
Mini football		Free access			Always
Cardio and weights room		Free access			Always
Entertainment*	✓		✓		Always
Swimming Pool activities		Initiation group lessons		16 years old	Always
Petanque (boules)		Free access			Always
Table tennis		Free access			Always
Cookery lessons		Initiation			Always
Excursion*	✓		✓		Always

\*on demand

\*\*Depending on weather conditions

\*\*\* Pre-bookable green fee packages at extra cost



# Facilities

## Swimming Pools

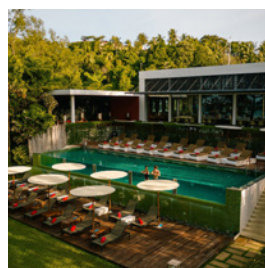


### MAIN SWIMMING POOL

Outdoor Pool

Depth (min/max): 0.5m / 2.5m

This freshwater swimming pool has three swimming areas with different depths and is equipped with teak deckchairs, parasols and showers.

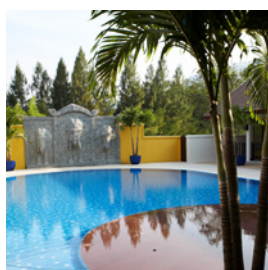


### QUIET SWIMMING POOL

Outdoor Pool

Depth (min/max): 18m / 1.2m

The pool reserved for adults over 20 years old, is located at the eastern edge of the Resort, with a spectacular view over the Bay of Karon. No lifeguard on duty.



### CHILDREN SWIMMING POOL

Outdoor Pool

Depth (min/max): 60m / 90m

Children can have fun in the two outdoor pools of the Kids Club. A pool at the Mini Club Med, and a shallow pool for the Petit and Baby Club Med.





# Childrens' Services



## Childrens' Clubs

Age Range	Name	Included Activities	On demand activities	Dates of Availability
0 to 2 years	Baby Club Med®	Walks		From 05-03-2020 to 07-05-2021
2 to 3 years	Petit Club Med	Show time		From 05-03-2020 to 07-05-2021
4 to 10 years	Mini Club Med	Petit Chef Program		From 05-03-2020 to 07-05-2021
11 to 17 years	Club Med Passworld	Show time		From 05-03-2020 to 07-05-2021

## Childrens' Activities

Age Range	Included Activities	On demand activities
0 to 2 years	Family "Big Snack"	
2 to 3 years	Family "Big Snack"	
4 to 10 years	Family tournaments & games	
11 to 17 years	Family tournaments & games	

## Childrens' Services

Age Range	Included activities & facilities	On demand activities & facilities
0 to 2 years		Pyjamas Club
2 to 3 years		Pyjamas Club
4 to 10 years		Pyjamas Club
11 to 17 years	My Club Med app	

\*on demand



# Restaurants



## Restaurants

### Bars

#### THE SANOOK

Main bar

#### ZEN BAR

### The Mamuang

Main Restaurant

Delight your senses. You'll savour a vast selection of international and local cuisines morning, afternoon, and into the evening at our main restaurant, located in the centre of the resort. Amidst colourfully themed spaces wrapped in hues of green, blue, yellow, and on a spacious terrace, sample from each of the buffet corners featuring a variety of local and global flavours. Discover the newly reimagined modern pavilions, which were designed with your five senses in mind. Colours, textures, music, flavour, and fragrance inspire unique dining perspectives while outdoor seating on the terrace makes our lush Phuket island landscape your soothing backdrop. For added convenience, a Baby Corner offers you a place to prepare special meals and a variety of amenities to make dining with your young one relaxing. Please note: High chairs and booster cushions are available upon request.

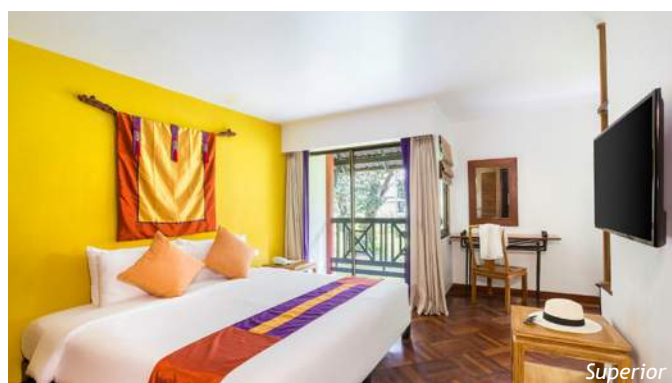
### The Chu-da

Speciality Restaurant

Dine and delight where Thai tradition meets modern elegance at Chu-da. Settle under a blanket of glowing lanterns where a warm, intimate atmosphere invites you to enjoy a cosy dining experience during the late afternoon and into the evening. Savour from our menu of "À la carte" fusion flavours and pair with the perfect wine. Sit by the sparkling pool out on the terrace or inside where it is air conditioned. Wherever you choose to dine, you'll enjoy the zen atmosphere of our resort's retreat zone on Kata Bay. Please note: Late breakfast is available. High chairs and booster cushions are available upon request.



# Accommodation



Category	Name	Min. m <sup>2</sup>	Highlights	Capacity	Bathroom	Equipment and services
Superior	Superior Room	26		1 - 3	Shower, Separate toilets, Slippers, Hair Dryer, Branded amenities (shampoo, shower gel, body lotion)	Drycleaning service (extra charge), Laundry service (extra charge), Beach towel, Luggage service, Cleaning on demand
	Superior Room - Mobility Accessible	30		1 - 2	Shower, Separate toilets, Slippers, Hair Dryer, Branded amenities (shampoo, shower gel, body lotion)	
	Interconnecting Superior Rooms	52		4 - 6	Shower, Separate toilets, Slippers, Hair Dryer, Branded amenities (shampoo, shower gel, body lotion)	Drycleaning service (extra charge), Laundry service (extra charge), Luggage service, Cleaning on demand
Deluxe	Deluxe Room - Terrace or Balcony	30		1 - 3	Shower, Separate toilets, Bathrobe, Slippers, Hair Dryer, Magnifying mirror, Branded amenities (shampoo, shower gel, body lotion)	Turn down service, Drycleaning service (extra charge), Laundry service (extra charge), Beach towel, Luggage service, Cleaning on demand
	Deluxe Room	34		1 - 2	Shower, Separate toilets, Hair Dryer, Magnifying mirror, Branded amenities (shampoo, shower gel, body lotion), Bathrobe, Slippers	Turn down service, Drycleaning service (extra charge), Laundry service (extra charge), Luggage service, Cleaning on demand
	Deluxe Room - Family Oasis	42		1 - 4	Shower, Separate toilets, Hair Dryer, Magnifying mirror, Bathrobe, Slippers, Branded amenities (shampoo, shower gel, body lotion)	
	Deluxe themed Room - Family Oasis	42		1 - 4	Shower, Separate toilets, Bathrobe, Slippers, Hair Dryer, Magnifying mirror, Branded amenities (shampoo, shower gel, body lotion)	
	Interconnecting Deluxe Rooms - Terrace or Balcony	60		4 - 5	Shower, Separate toilets, Bathrobe, Slippers, Hair Dryer, Magnifying mirror, Branded amenities (shampoo, shower gel, body lotion)	Turn down service, Drycleaning service (extra charge), Laundry service (extra charge), Beach towel, Luggage service, Cleaning on demand
	Suite	Suite - Balcony	74	Separate Living Room, Separate kids' room	1 - 2	Bathtub, Shower, Separate toilets, Twin vanity sinks, Hair Dryer, Magnifying mirror, Bathrobe, Slippers, Branded amenities (shampoo, shower gel, body lotion)



Category	Name	Min. m <sup>2</sup>	Highlights	Capacity	Bathroom	Equipment and services
	Suite - Balcony, Interconnecting with Deluxe Room - Terrace or Balcony	104	Separate kids' room, Separate Living Room	4	Shower, Separate toilets, Hair Dryer, Branded amenities (shampoo, shower gel, body lotion), Bathtub, Twin vanity sinks, Bathrobe, Slippers, Magnifying mirror	Inclusive of room service for continental breakfast, Turn down service, Drycleaning service (extra charge), Laundry service (extra charge), Beach towel, Luggage service, Private transfer for G.M® with transfer package

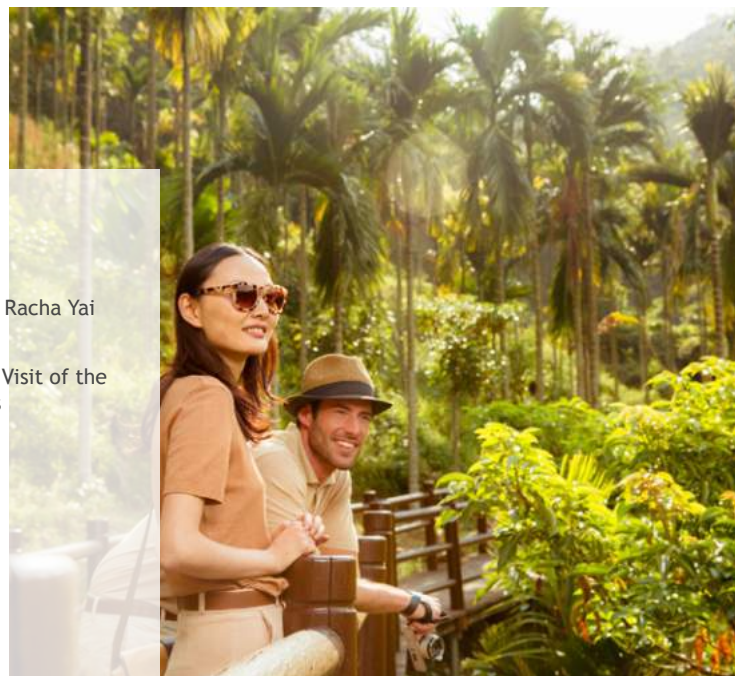




# Wellness & Excursions

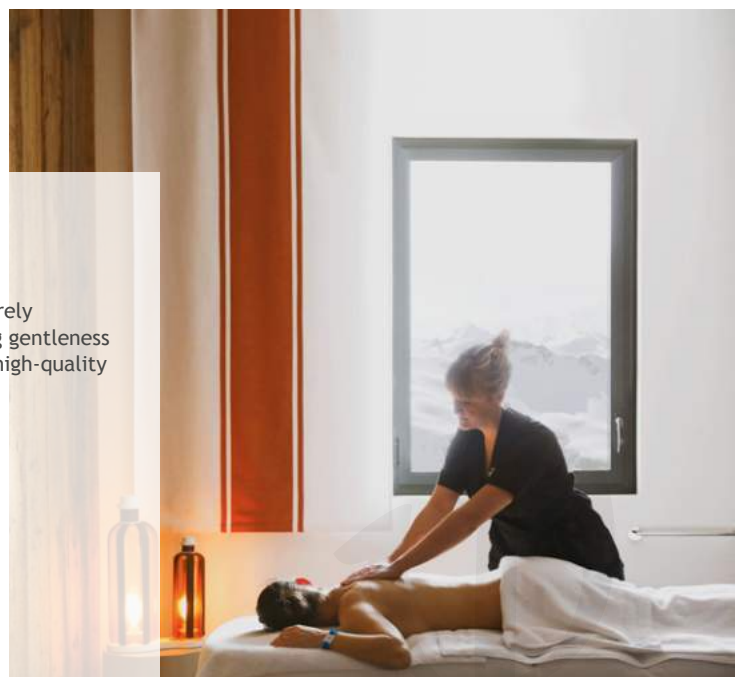
## Excursions

- Nature getaways : The Phi Phi islands / Phang Nga Bay by Junk and canoe / Racha Yai Island / Coral and Mation island by speed boat
- Connecting with culture : Chalong Bay - Cocktail Workshop / Chalong Bay - Visit of the Distillery / Bangkok (à la carte) / Historical Phuket / Big Buddha & Temples
- Sense of adventure : Catamaran Sunset Cruise / Simon Cabaret



## Club Med Spa

Entrust your body and mind to the savoir-faire of the G.Os® who will be entirely dedicated to you. They offer you a genuine relaxation experience, combining gentleness and expertise. Your senses will be gently awakened to the fragrances of our high-quality creams, selected specially for you.





# Practical Information



**CLUB MED PHUKET - HOLIDAY VILLAGES**  
 3 KATA ROAD, KARON S-D, A. MUANG  
 DISTRICT, Island of Phuket  
 83100, Thailand



Green Globe:  
 International award  
 recognising our resorts  
 for their commitment to  
 sustainable development



## Download My Club Med App!

Discover the resort's dress codes, events, map & practical information.

## Check-in made simple with Easy Arrival

## Information

### CHECK-IN/CHECK-OUT

Times of arrival/departure from the Resort:  
 For all stays, arrival between 3 and 8 pm.  
 G.M@s who arrive early may be able to have lunch at extra cost, subject to availability.  
 Rooms available during the afternoon.  
 Rooms to be vacated by 10 am on day of departure, for departure from the Resort at 3 pm (breakfast and lunch included).  
 Should any of these times change, the revised times will be given in your "Holiday Rendez-Vous".

### TRANSFERS

Phuket airport (60 mins.)

